

Integrating Early Childhood Development into Formal and Informal Health Services in Kenya and Mozambique

Program for Appropriate Technology in Health (PATH), 2201 Westlake Avenue, Seattle, WA 98109

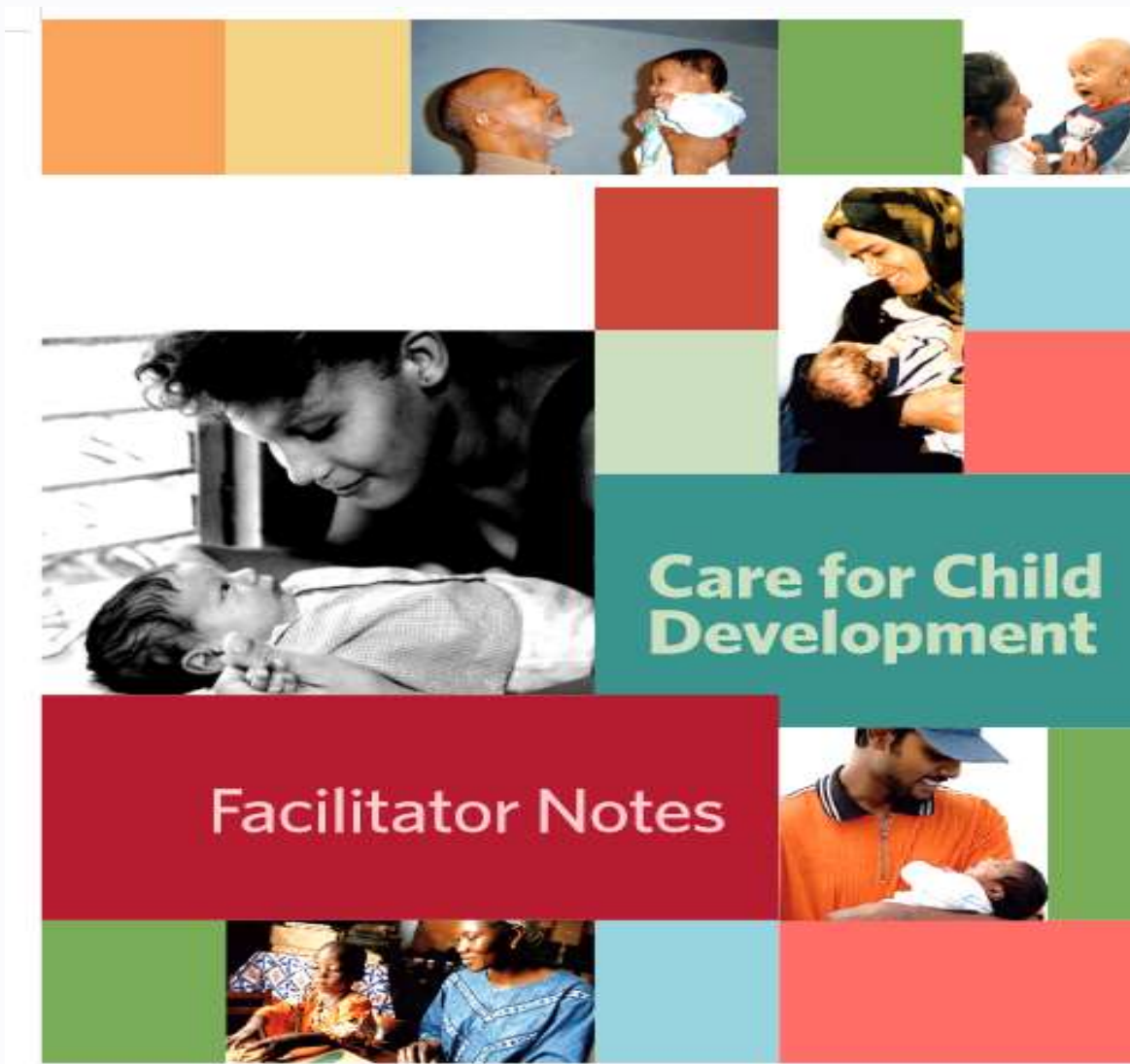
Essential Package



Photo credits: Debejeet Sen, Svetlana Drivdal

- **Target group:** Vulnerable caregivers and children from pregnancy to age 5 years.
- **Materials:** *Essential Package* Visual Guides extensively adapted through formative research, toys developed from locally available materials, local games and songs, recipes, etc.
- **Implementers:** Government community health workers [CHWs] (Kenya) and community-based organization (CBO) volunteers (Mozambique); supervised by government community health extension workers (CHEWs) and CBO supervisors, respectively.
- **Platform:** Home visits to deliver key intervention messages and demonstrate best practices.

Care for Development



BIRTH UP TO 1 WEEK	TO 6 MONTHS	UP TO 9 MONTHS	UP TO 12 MONTHS	UP TO 2 YEARS	AND OLDER
<p>Your baby learns from birth</p> <p>PLAY Provide ways for your baby to see, hear, move arms and legs freely, and touch you. Gently soothe, stroke and hold your child. Skin to skin is good.</p> <p>COMMUNICATE Look into baby's eyes and talk to your baby. When you are breastfeeding is a good time. Even a newborn baby sees your face and hears your voice.</p>	<p>PLAY Provide ways for your child to see, hear, feel, move freely, and touch you. Slowly move colourful things for your child to see and reach for. Sample toys: shaker rattle, big ring on a string.</p> <p>COMMUNICATE Smile and laugh with your child. Talk to your child. Get a conversation going by copying your child's sounds or gestures.</p>	<p>PLAY Give your child clean, safe household things to handle, bang, and drop. Sample toys: containers with lids, metal pot and spoon.</p> <p>COMMUNICATE Respond to your child's sounds and interests. Call the child's name, and see your child respond.</p>	<p>PLAY Hide a child's favourite toy under a cloth or box. See if the child can find it. Play peek-a-boo.</p> <p>COMMUNICATE Tell your child the names of things and people. Show your child how to say things with hands, like "bye bye". Sample toy: doll with face.</p>	<p>PLAY Give your child things to stack up, and to put into containers and take out. Sample toys: nesting and stacking objects, container and clothes clips.</p> <p>COMMUNICATE Ask your child simple questions. Respond to your child's attempts to talk. Show and talk about nature, pictures and things.</p>	<p>PLAY Help your child count, name and compare things. Make simple toys for your child. Sample toys: Objects of different colours and shapes to sort, stick or chalk board, puzzle.</p> <p>COMMUNICATE Encourage your child to talk and answer your child's questions. Teach your child stories, songs and games. Talk about pictures or books. Sample toy: book with pictures.</p>



Photo credits/sources: Alberto Cinquenta, Svetlana Drivdal, UNICEF

- **Target group:** Vulnerable caregivers and children from birth to age 3 years.
- **Materials:** *Care for Development* manual, counseling cards, toys from local materials, etc.
- **Implementers:** Maternal and child health (MCH) nurses and *Agentes Polivalentes Elementares* (APEs [CHWs]), CBO volunteers (Mozambique).
- **Platform:** Health facility and waiting room consultation; home visits.



Adaptation of materials



Training of trainers



Training of volunteers



Supportive supervision

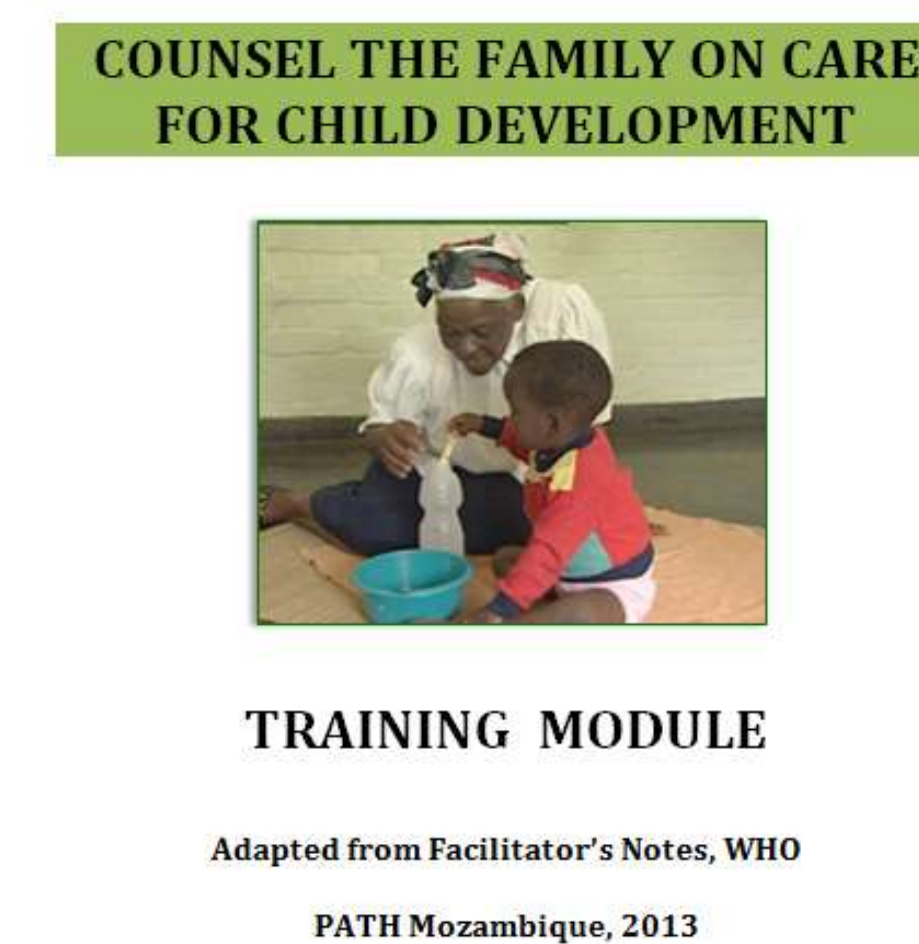


Evaluation of home visits



Home visits

Photo credits: Alberto Cinquenta, Debejeet Sen, Domingos Mahangue, Svetlana Drivdal



Adaptation of materials

Photo credits: Alberto Cinquenta, Domingos Mahangue, Svetlana Drivdal



Training of MCH nurses, APEs, and supervisors



Simulation of activities with children



Preparation of bag of toys for implementers

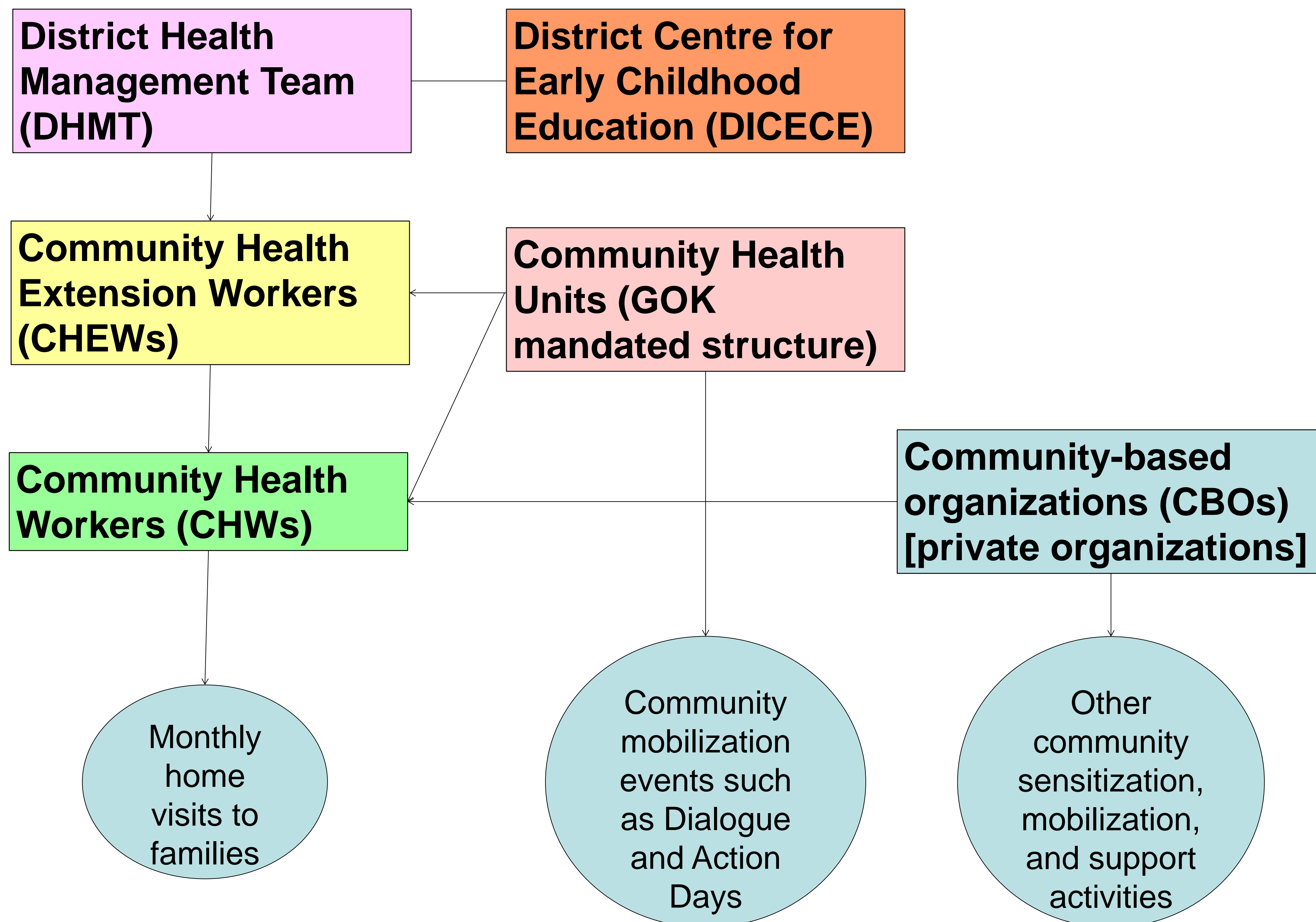


Simulation of activities with children

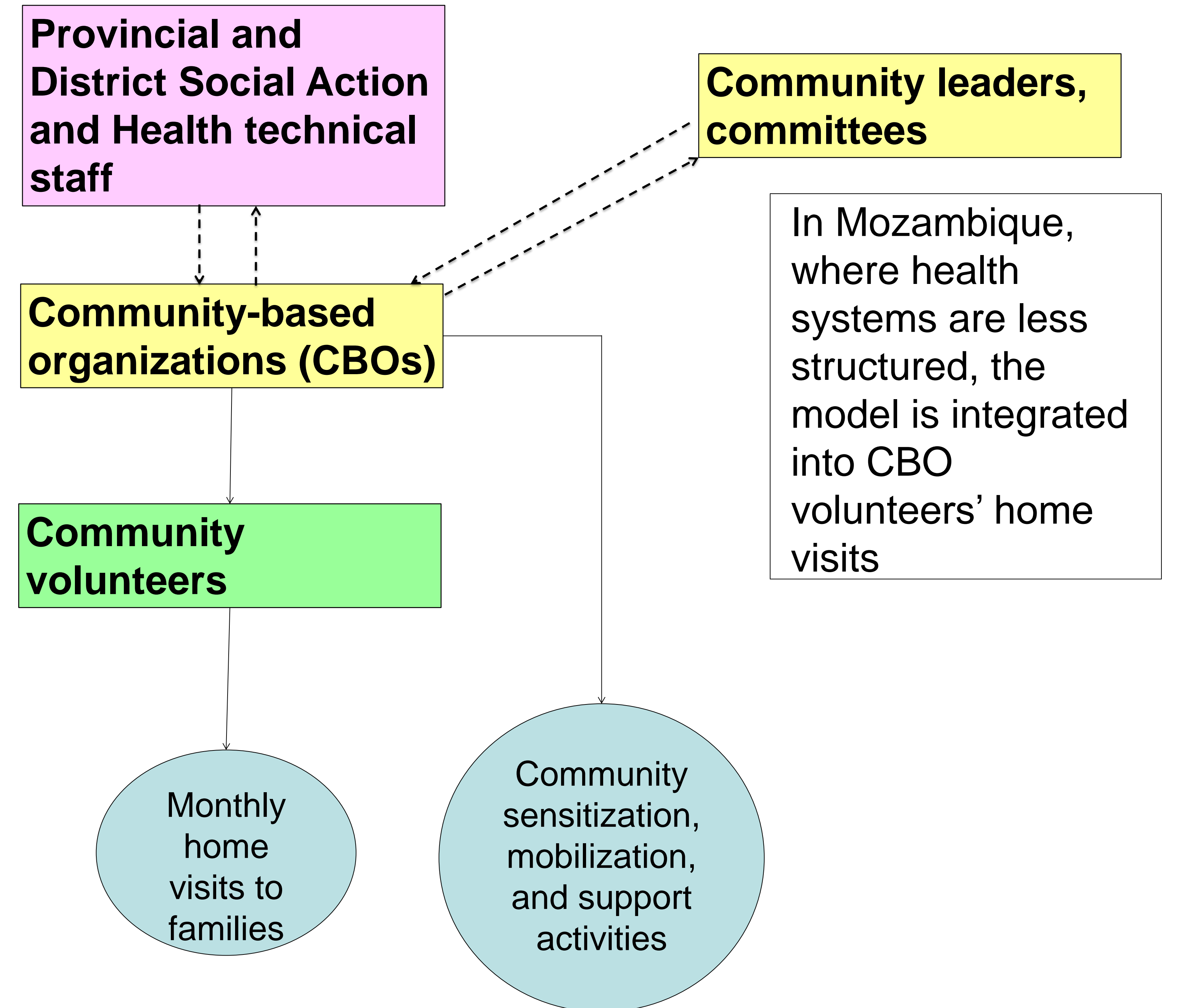
Integrating Early Childhood Development into Formal and Informal Health Services in Kenya and Mozambique

Program for Appropriate Technology in Health (PATH), 2201 Westlake Avenue, Seattle, WA 98109

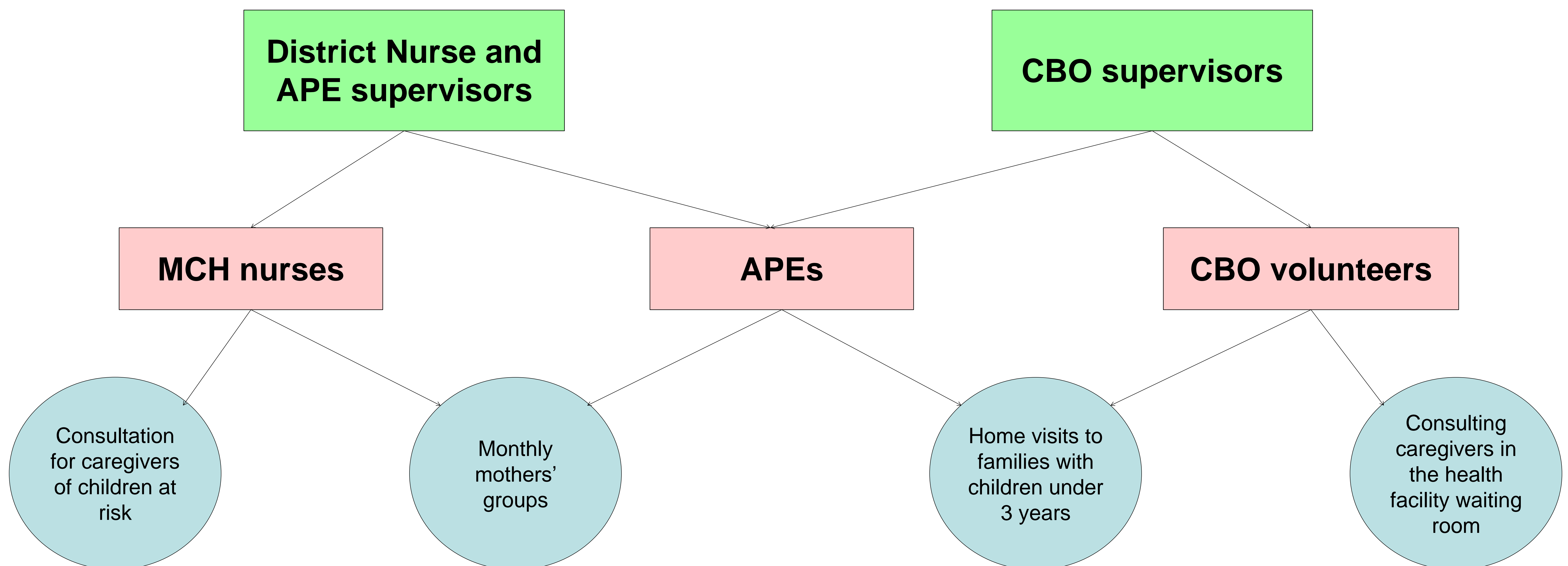
Essential Package Kenya



Mozambique



Care for Development (Mozambique)



Integrating Early Childhood Development into Formal and Informal Health Services in Kenya and Mozambique

Program for Appropriate Technology in Health (PATH), 2201 Westlake Avenue, Seattle, WA 98109

Addressing challenges—the way forward:

Government, supervisors

- Engage in strategic advocacy for the integrated ECD model; showcase real-life experiences.
- In order to address supervisors' demands for additional allowances, use existing government supervision systems and tools—instead of creating parallel structures.



Photo credits: Alberto Cinquenta, Debjeet Sen

Practitioners (CHWs, nurses, volunteers)

- In order to ensure that caregivers are not neglected during home visits, reinforce the practice of “teaching the caregiver to teach the child” at in-service trainings.
- In order to promote language development and problem-solving, adapt traditional games that normally address physical aspects of development.
- To address concerns about care and stimulation being “additional work,” showcase CHWs that successfully integrate ECD activities and sensitize supervisors on the importance of ECD.

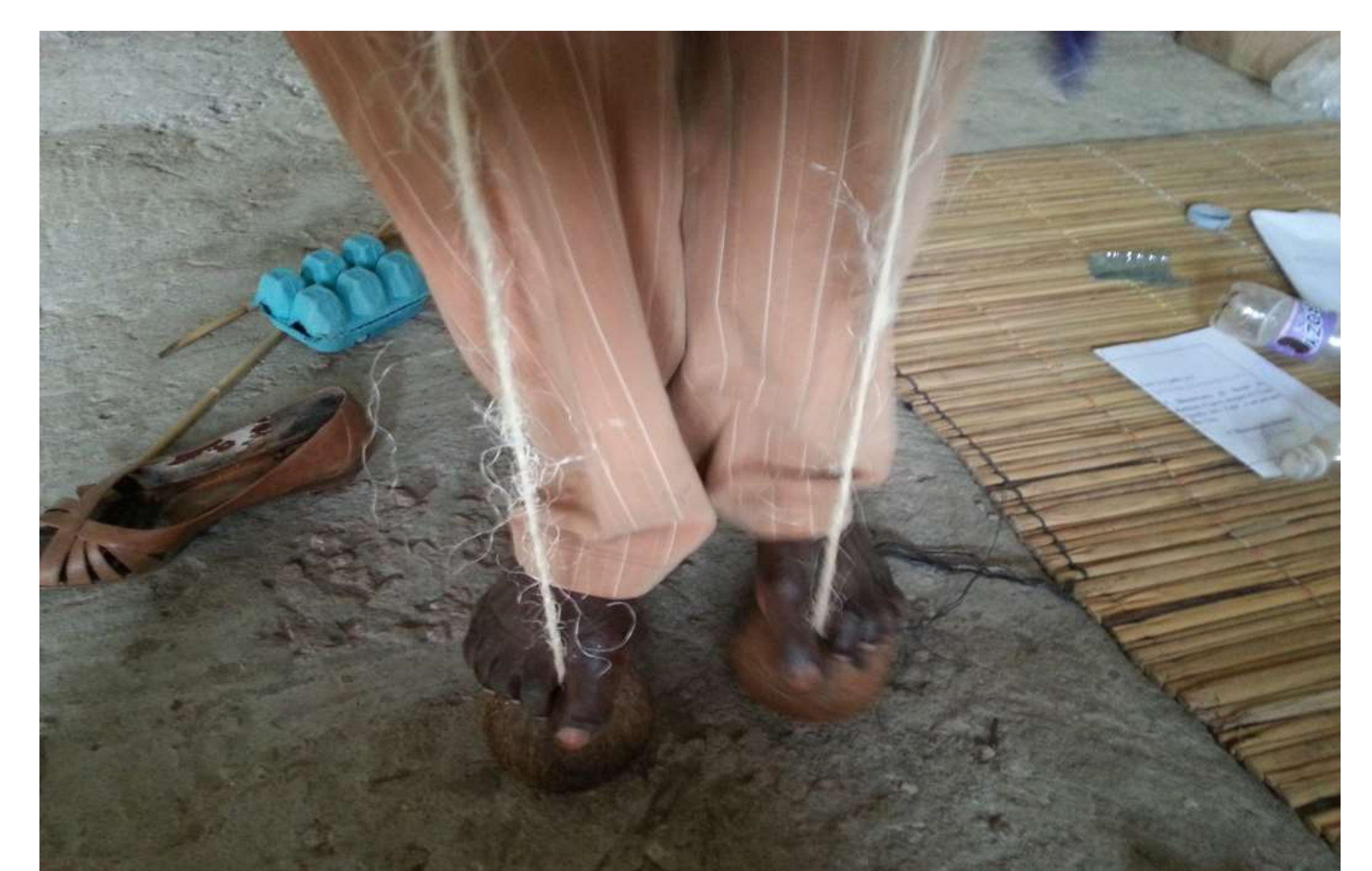


Photo credits: Domingos Mahangue, Svetlana Drivdal

Caregivers

- To reach out to caregivers' who are “too busy” to play with children, teach ways to integrate ECD into daily activities, identify “positive deviants,” and stress the importance of ECD.
- Translate *Essential Package* Visual Guides into local languages and improve the quality of images to reach a wider audience.