

A photograph of a woman with a joyful expression holding a young child. The woman is wearing a dark jacket and the child is wearing a red, white, and blue striped sweater. They are standing in front of a building with a mud-brick wall. In the background, there is a dirt path and other simple structures, suggesting a rural or informal settlement environment.

# WORKING TOWARDS AN INTEGRATED APPROACH TO REACH YOUNG HIV-AFFECTED CHILDREN IN KIBERA

Kennedy Odede, CEO and Founder



# Kibera: My Home



- ❑ Est. population of 1.2 million
- ❑ One out of 5 children do not live to see their 5<sup>th</sup> birthday



# What my community needed...

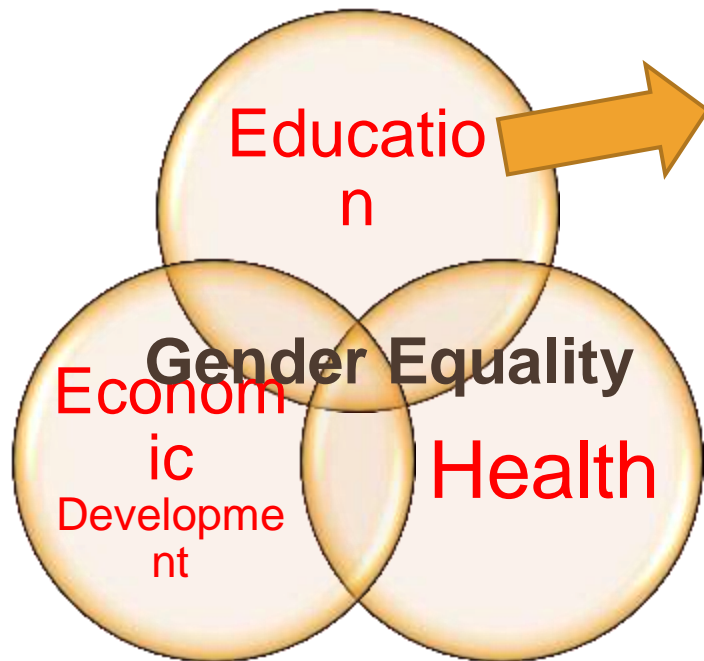
Shining Hope for Communities (SHOFCO) combats extreme poverty and gender inequity by linking a school for girls to a set of high-value, holistic community services for all in the urban slums of Nairobi, Kenya.



In our model, a girls' school becomes a portal for large-scale social change.

# From problems to solutions...

Our core interventions center on the pillars of education, health, and improved economic well-being and **INTERSECT** with the goal of achieving **gender equality**



OUR MODEL

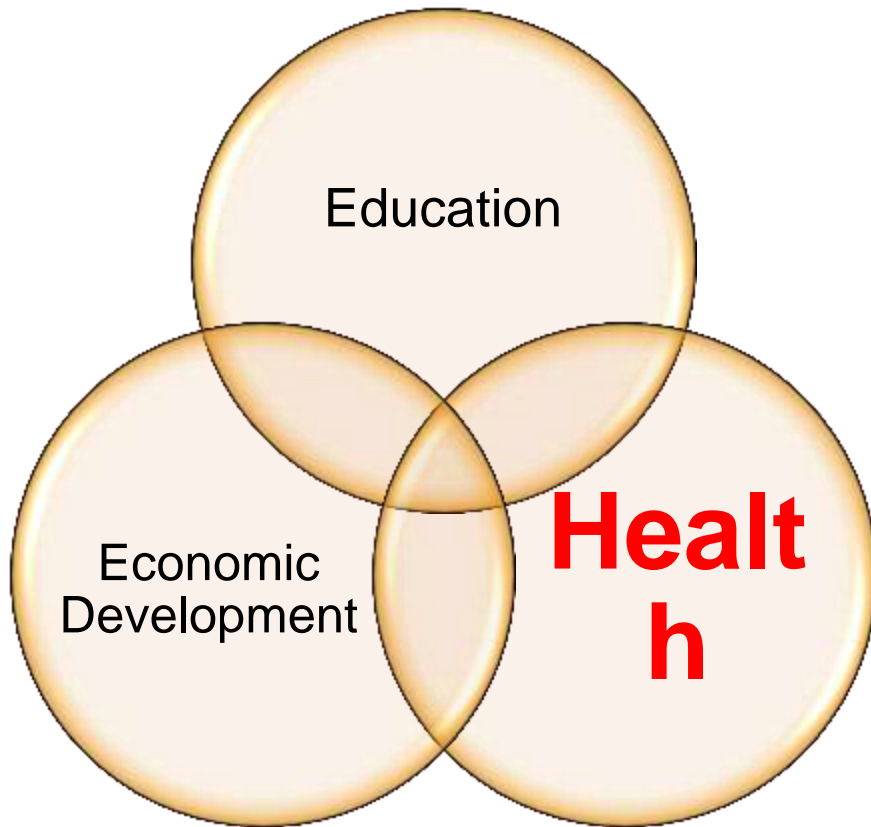
This is how we started!



**How does SHOFCO target  
HIV-affected children (*ages  
0-6*)  
in this model?**

Let us examine the pillars one by  
one...

# I saw health was essential....



## HEALTH

SHOFCO's Community Clinic currently has the following entry points to reach young HIV-affected children:

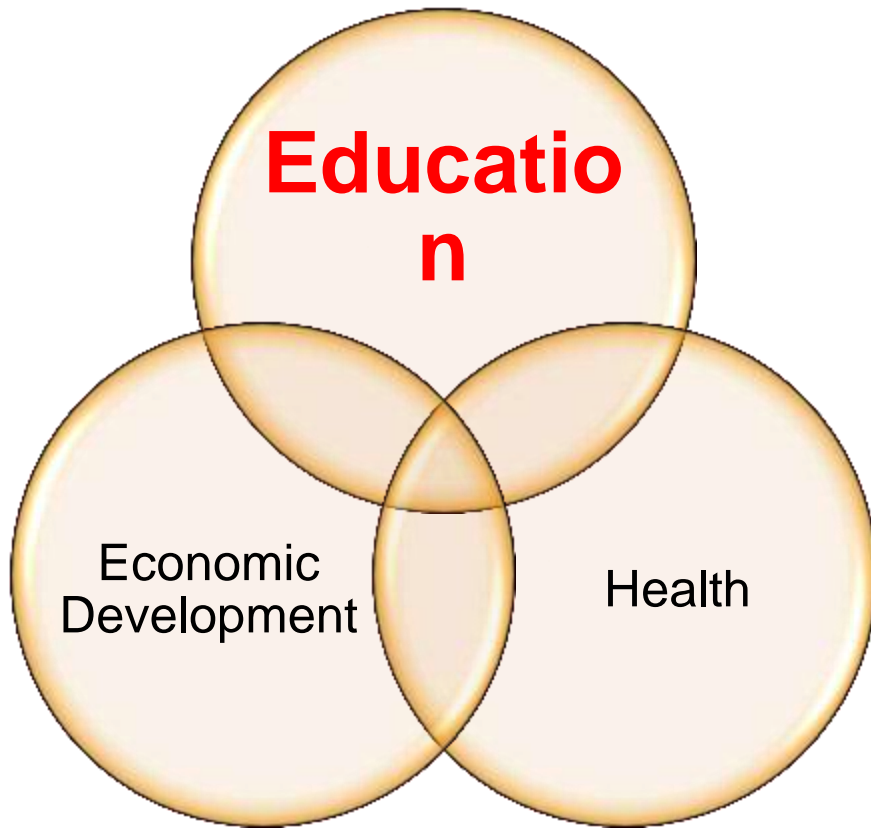
- PMTCT
- ARV Treatment (CCC)
- Maternal Health and Early Childhood Care Clinic (including wellness, and immunization for babies and children ages 0-6)



## Why it is promising: Health

In addition to providing PMTCT, ARV, Maternal Newborn & Child Health, and family planning services at our Clinic -- by strengthening existing early childhood-focused healthcare services, we are better equipped to respond to the special health needs of young HIV-affected children.

# I saw education as a way to disrupt poverty



## EDUCATION

Increasing the capacity of our **early childhood development (ECD)** services through the expansion of our day care facility and pre-school at the Kibera School for Girls allows us to better respond to the educational needs of HIV-affected children.



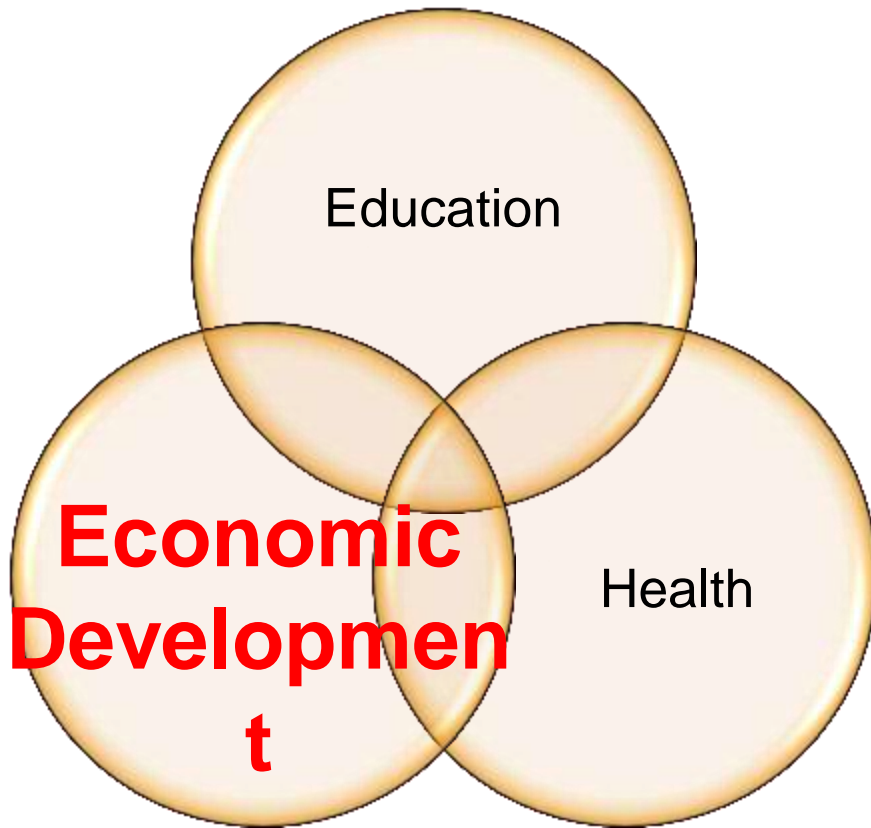


## Why it is promising: Education

By expanding the capacity of the KSG pre-school, we create conducive environments for positive psycho-social and cognitive development that is sensitive to the needs of young HIV-affected children.

0% of our girls at KSG are malnourished. And 100% of our HIV-affected students (ages 0-6) are receiving post-exposure prophylaxis.

# And improving economics changes everything



## ECONOMIC DEVELOPMENT

- SWEP teaches business and entrepreneurship skills to ***HIV-positive women***
- Group Savings and Loans

Currently, 80% of our HIV-positive SWEP mothers have children under 6 or are pregnant.



## Why it is promising: Economic Development

- ❑ **100%** of our SWEP mothers who have children ages 0-6 report that their income from SWEP enables them to support the needs of their young HIV-affected children.
- ❑ **78%** of women involved in our Economic Empowerment Programs have a source of income.

# INTEGRATION is the key

## **SWEP (SHOFCO Women Empowerment Program)**

A young child's success is interdependent on economic circumstances of the family.



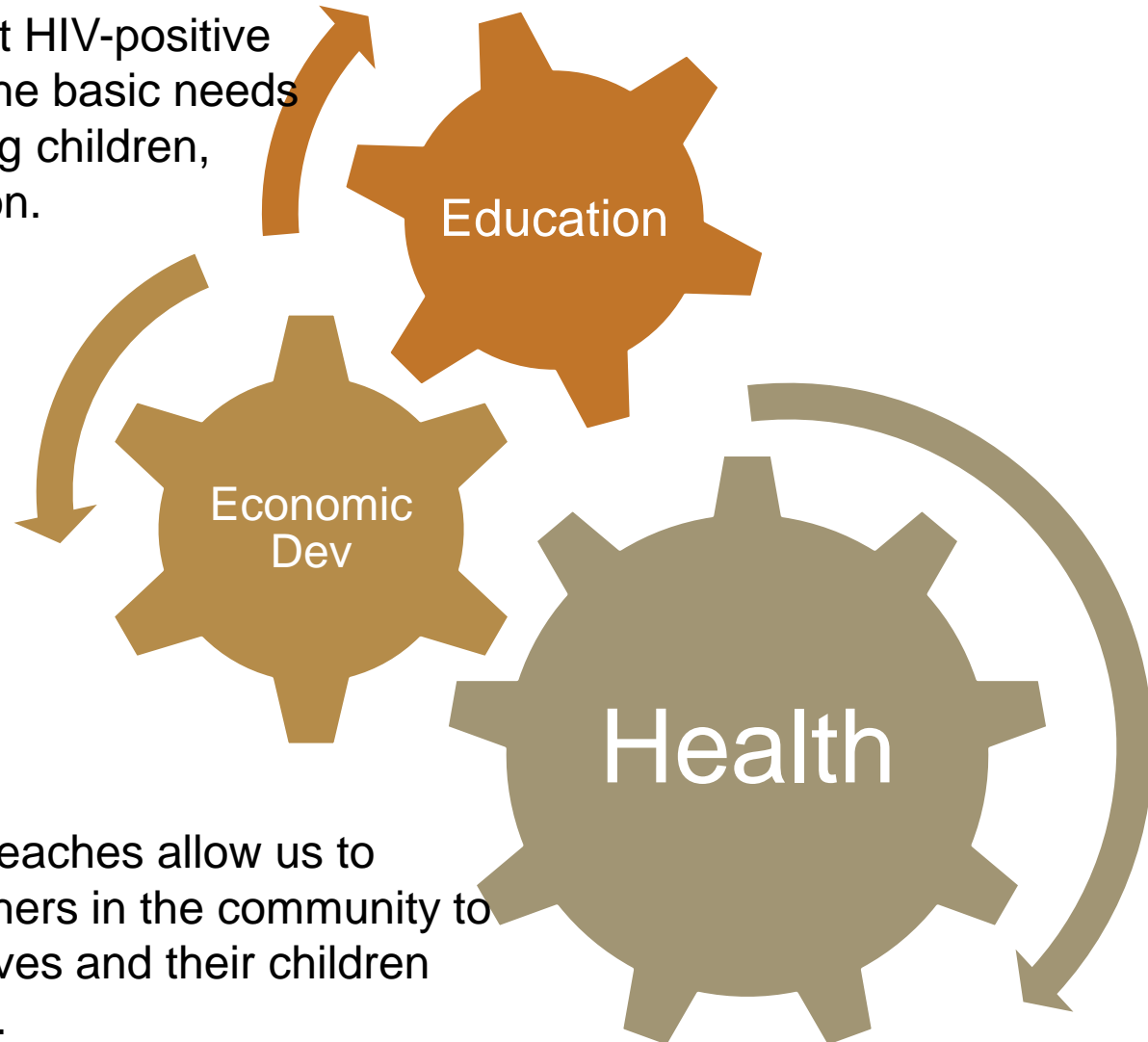
Helping HIV-positive women earn income directly improves the living standards of young children born into HIV-affected families.

**Currently, 24% of our SWEP mothers are on ARV therapy, of which 80% are**



# PROCESS: Example of a successful integration

**3** A financially independent HIV-positive mother can provide for the basic needs of her HIV-affected young children, most especially education.



**2** Once confirmed positive, most of these mothers struggle to find employment due to the stigma and discrimination. Some were also abandoned by husbands.

**1** CHW-led outreaches allow us to convince mothers in the community to have themselves and their children tested for HIV.

# A better integrated approach

**How will SHOFCO improve?** There are two ways to strategically reach young HIV-affected children in our model:

First, expand **HEALTH** services to provide joint nutrition and ARV therapy for HIV-affected children (*ages 0-6*).

Second, strengthen and expand the linkages between services under the **Education** and **Economic Development** pillars.



Expanding our family-focused approach:

- Provide HIV/AIDS-infected mothers with economic opportunities such as SWEP and GS&L.
- Employ caregivers in our ECD services to educate pregnant mothers in our PMTCT program

# Next steps...

## Challenges

- Parents who cannot afford to feed their young children sufficiently while taking strong ARV drugs
- Lack of ARV drugs for young children due to inconsistent government supply

## Solutions

- Establish HIV Pediatrics unit that is linked to a nutrition program for children taking PEP medication
- Conduct more CHW-led outreaches to encourage women to enable themselves and their babies to be tested
- Coordinate with other clinics to facilitate referrals



I saw INTEGRATION is everything.

INTEGRATION allows us to meet the holistic needs of young HIV-affected children in our family-centric approach. Consistent with SHOFCO's goal of achieving gender equality, ensuring that we have healthy, educated, and economically empowered HIV-affected mothers will have ripple effects on the welfare of their young children.



Thank you!

